

ENTERPRISE PRINTER MONITOR 2.0

Track your printers



FACT SHEET

Introduction

The Enterprise Printer Monitor System (EPMS) monitors the printing activities of the printers in the network.

The type of printers monitored is

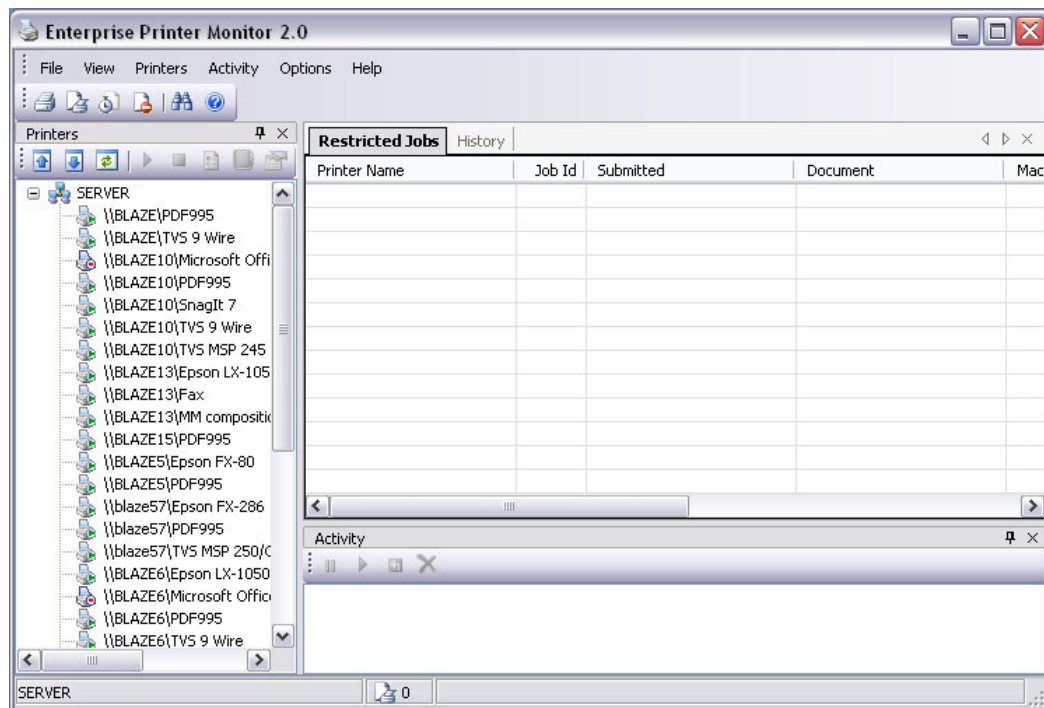
- Local Printers
- Connected Printers
- Network Printers

The EPMS monitors the print jobs sent to the printer spooler. It displays the information regarding the print job. The data is maintained in a persistent database. Also the spool files (in EMF format) are copied, to produce a duplicate copy of the actual document being printed (in EMF format only).

The print jobs information stored in the database can be reviewed at a later time, using the reports.

ENTERPRISE PRINTER MONITOR 2.0

Track your printers



Key Benefits

- Captures all printing activities
- Eliminates administrator needed to monitor the printers in an organization
- Accounts all print outs taken in the organization
- Monitors the status of the printer
- Restricts print jobs to printers
- Allow setting limit on print pages
- Allow setting cost on print pages

ENTERPRISE PRINTER MONITOR 2.0

Track your printers



Software Requirements

Operating System: Windows NT 4.0, Windows 2000 Professional, Windows XP, or Windows server family

Runtime Environments: Microsoft 2.0 .Net runtime environment, Microsoft data Access Components 2.8 (Minimum)

Supported Windows print queue server platforms

Windows 98/ME

Windows NT 4.0, Windows 2000, Windows XP and Windows Server Family

Product Features

Network Printers: The Print Monitor software monitors all the printers in the Networks Domains. It has the ability to control all the printers from the software functions.

Printer Configuration: Each printer can be configured to block printouts from certain Users (or all). Also Limits can be set on the pages printed for the Windows Users & Groups.

Cost can be associated with each page, so that the maintenance cost of the printers can be calculated and verified easily.

ENTERPRISE PRINTER MONITOR 2.0

Track your printers



Activity: The Activity window displays all the current activities in the Printers. The Administrator can Control (Pause, Resume, Restart or Cancel) the Print Jobs from the Software.

Spool File: Enterprise Printer Monitor does have this unique feature of displaying the content of the Printed Job (provided the Print Job format is in EMF Format). This feature allows Administrator to have the Document copy for future Auditing.

Search: Search through the history of Print Jobs recorded in the software. Search option is provided with criteria's to narrow the search of the required information.

Reports: Reports can be taken on each printers Print Job history. Report filters are also available to reduce the Report records to the bare minimum of the information required.

Mail Notifications: Mail Notifications are also available based on the Print Job Events. For e.g. the Administrator can configure the software to receive Notifications, every time a new Print Job is submitted to any one of the Monitored Printers.

ENTERPRISE PRINTER MONITOR 2.0

Track your printers



Company facts

Blaze Technology Solutions (P) Ltd., Pondicherry, India, a premier Software development and Management organization, has a credit of years experience in providing IT solutions to its client in and out of India, binding to the standards of software development. Blaze is managed by an efficient team of management and Technological experts, with a well-established quality department that targets quality solution in time, thereby gaining a better reputation among its clients. Both the development and testing methodologies are followed by state of art strategies of the IT domain.

Blaze offers a wide range of services to support the lifecycle of software applications like comprehensive IT services, including strategic planning, application development, integration, data conversion, networking, performance tuning and infrastructure to support the critical business process of corporate. The company is designed to meet the individual requirements of start-ups, internet businesses, and companies with their own established software product lines. Blaze is looking to develop long term working relation with its customer that committed to improve their operation through power of Internet.

Our technology has empowered Organizations to deliver efficient and cost effective services to their customers. As a company, we have collectively made significant achievements in the IT field, lagging behind none. Looking back at

Blaze Technology Solutions (P) Ltd.



B L A Z E

PAGE 5 OF 7

ENTERPRISE PRINTER MONITOR 2.0

Track your printers



where we started a long way back, we've made significant progress in terms of technology, resources, strategy, exposure and customer satisfaction. Continuous learning during each step of our endeavor has helped a lot to better us day by day, which is recognized by our clients as well.

Service

Blaze is a leading global provider of software and website development services. We have enough experience in developing software solutions to meet the myriad of IT challenges. We do service on

- Web solutions
Website design, Database driven site (e- Commerce), Flash websites, Web promotion, Website maintenance, Web Hosting
- Software Development
Client Server Applications, Distributed Applications, Component Development
XML Applications, Wireless
- WAP development
- Enterprise wide solutions (ERP)
- Multimedia

ENTERPRISE PRINTER MONITOR 2.0

Track your printers



Contact information

Head quarters

Name of the Firm : Blaze Technology Solutions (P) Ltd.

Address : LA Complex
Sithanandha Nagar, Villupuram N.H,
Pondicherry-605 005, INDIA.

Contact Person : Bhaskar Janakiramane G, CEO

E-mail Address : info@blaze.in

Telephone Number : +91-413-2200267, 2202032, 5208408

For more details visit us @ <http://www.blaze.in>